

Reducing incidents of pressure ulcers

Timi Ogunlowo, Julia Callus, Bisi Oshinbolu, Caroline Dowsett

Pressure ulcers within the community has been a major challenge both in managing and prevention. This causes a major cause of stress and distress for patients. this results in a better quality life for patients cared for within the community.

- Aim**
1. To reduce grade 3-4 PUs acquired in the EPCS by 25% by December 2015.
 2. To reduce grade 2 PUs acquired in the EPCS by 25% by December 2015

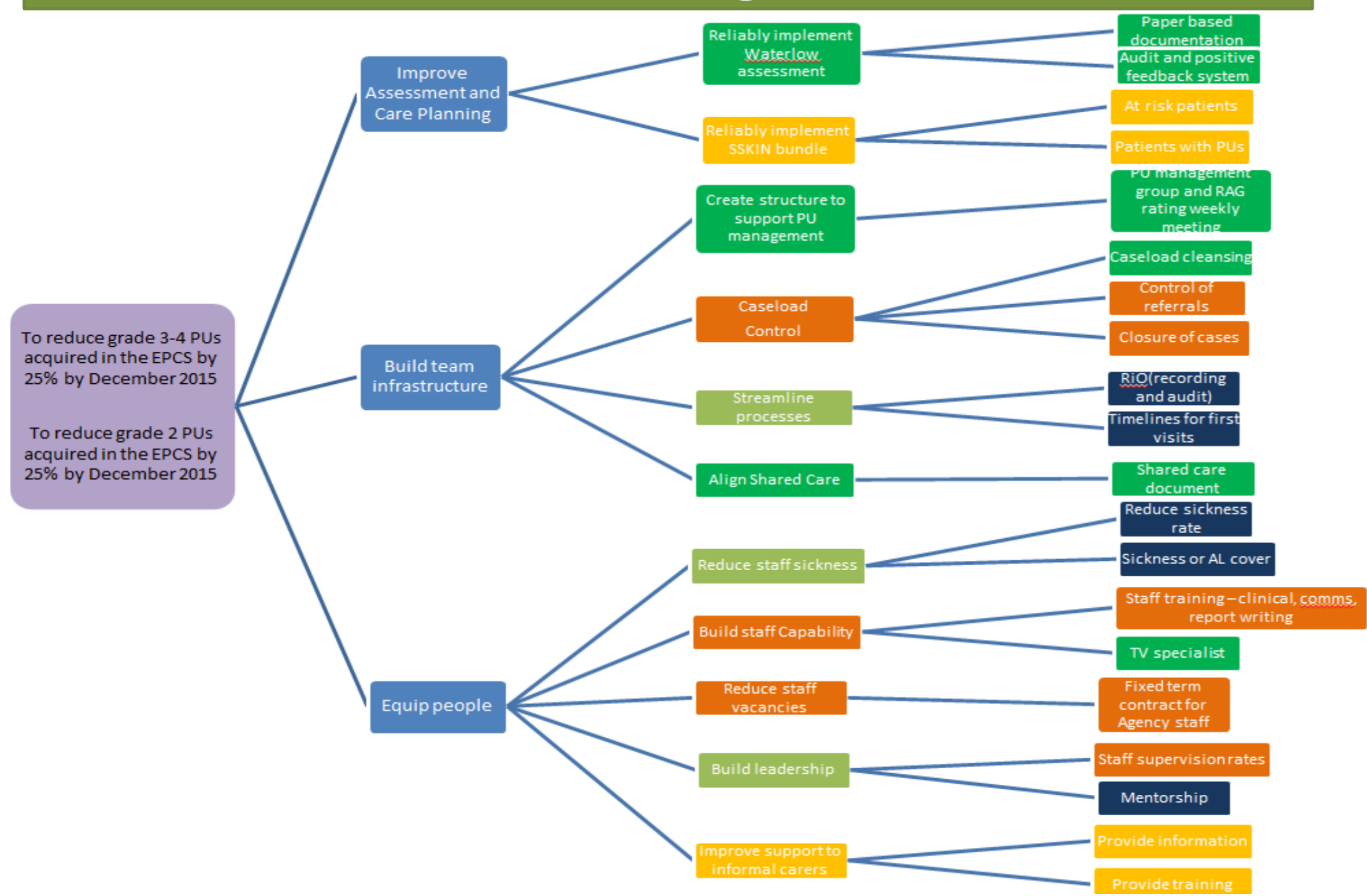
Measures:

No. of water low assessment completed for all new patient; No. of SSKIN Bundle care plans completed for all patients with water low scores above 10.

Chosen to effectively prevent pressure ulcer, as patients at risk need to be identified, this is done through the water low score and preventative care plan needs to be put in place (SSKIN Bundle)



Driver diagram



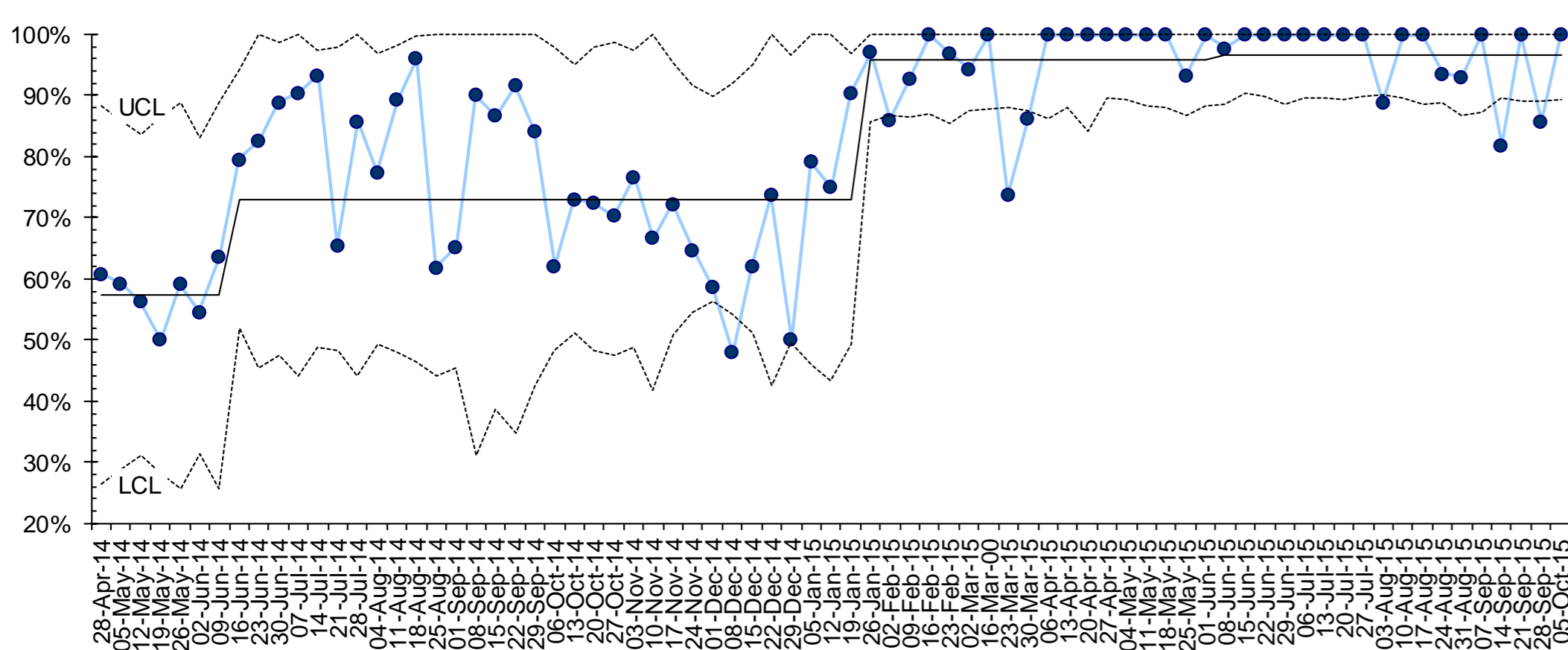
Testing

Tested to see if completing water low scores on all newly referred patients and putting a SSKIN Bundle in place will reduce the incidence of pressure ulcers amongst house bound patients

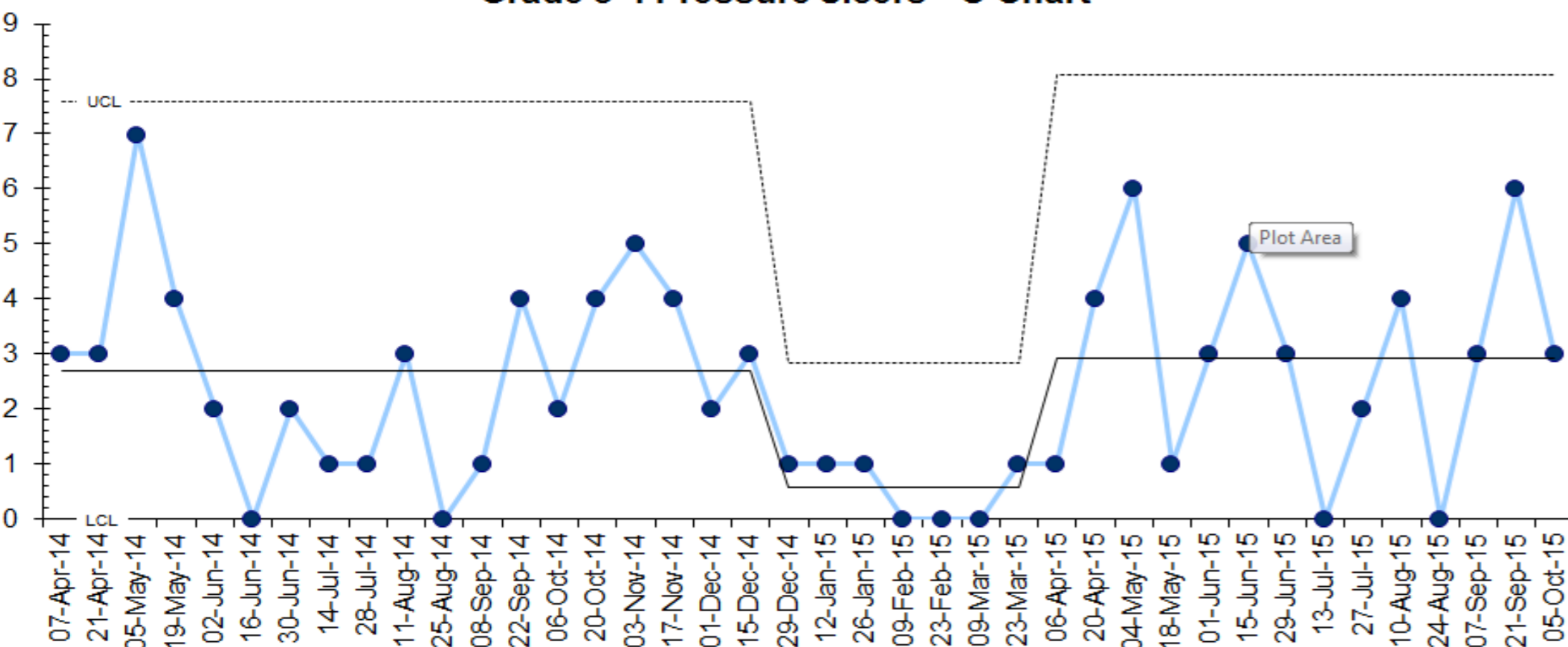
Finance:

Aim: To determine the cost for treatment of a Grade 2, 3 and 4 pressure ulcer based on average clinical visits and treatment plans which is summarised in the first 4 columns. The finance team obtained data on the number of acquired pressure ulcers per grade from Apr-15 to Nov-15 and mapped this to produce a cost of acquired pressure ulcers to the EPCS.

Overall Waterlow Completion Rate in EPCT - P Chart



Grade 3-4 Pressure Ulcers - C Chart



Data for Apr-15 to Nov-15

Type	Average Treatment Plan	Average Clinical Visits Per Patient	Average Treatment Cost Per Patient	No. of Acquired Pressure Ulcers	Cost of Acquired Pressure Ulcers
Grade 2	4 weeks	15	£853	93	£79,329
Grade 3	18 weeks	78	£5,653	34	£192,202
Grade 4	52 weeks	445	£27,659	13	£359,567

Total Cost to EPCS on Acquired Pressure Ulcers

£631,098

Learning:

A reduction in pressure ulcers has been observed, this has led to change in clinical practice as all MDT members have been trained to complete a water score assessment and identify patients at risk of a developing pressure ulcers. This is now embedded in practice.

Next Steps:

We've held 2 engagement sessions with staff across EPC and are supporting the development of new QI groups within the service to lead new improvement ideas

