

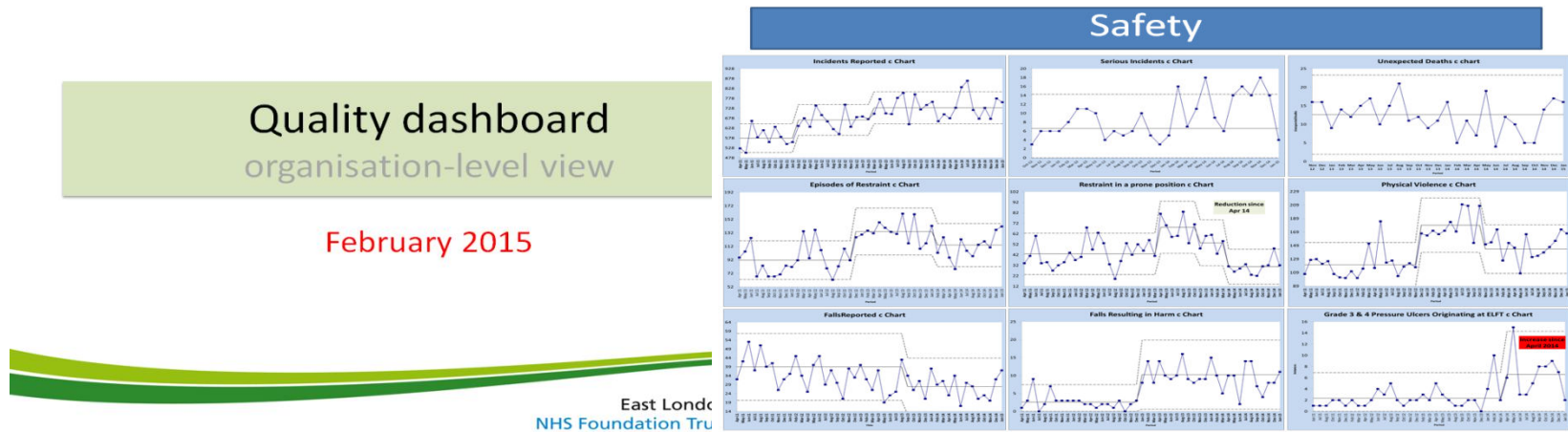
# Statistical Process Control (SPC) Integration into ELFT

Project leads: Thomas Nicholas and Forid Alom

Project team: Daniel Woolf, Christopher Reynolds, Zainub Abdulla

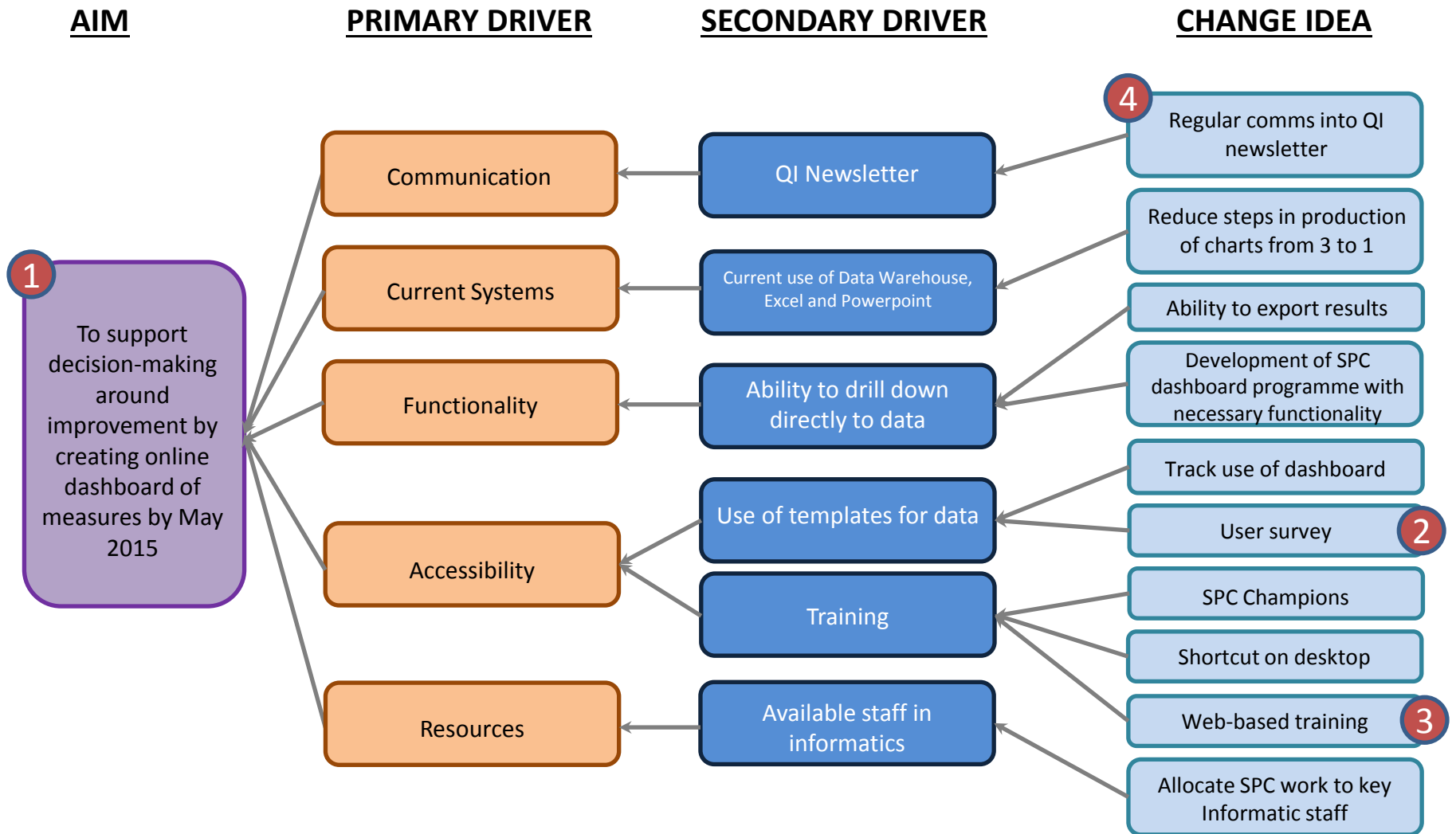
# Background

- The trust board receives a high level QI dash board bi-monthly
- Can this data be placed online allowing greater decision making?
- Can each team and ward across the trust be allowed to view and manage their local data and the trusts wider objectives?



ELFT bi-monthly QI dashboard (hard copy)

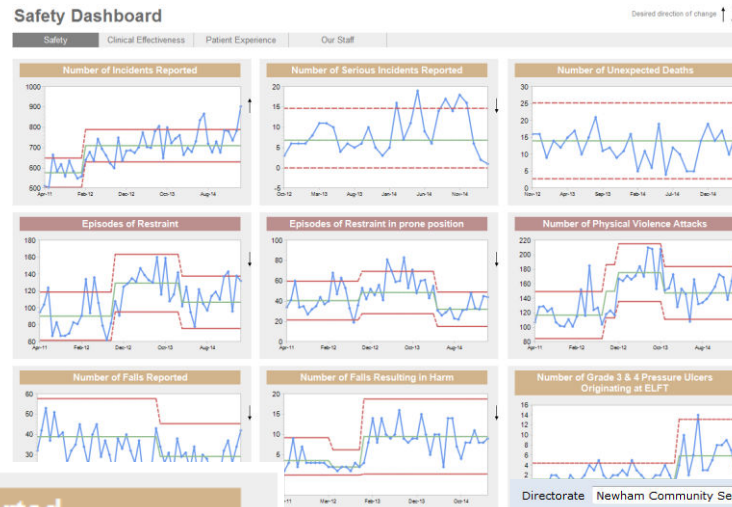
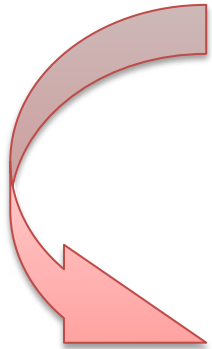
# SPC SOFTWARE INTEGRATION INTO ELFT



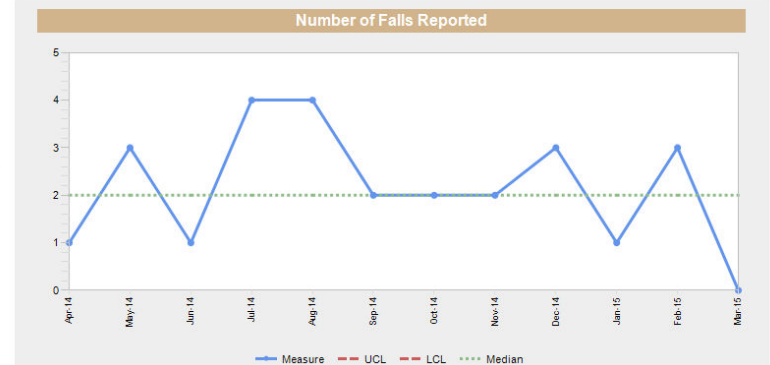
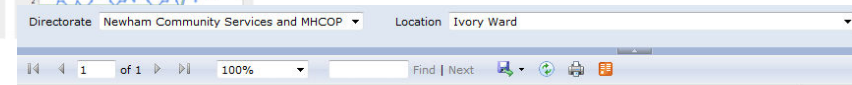
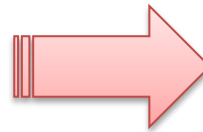
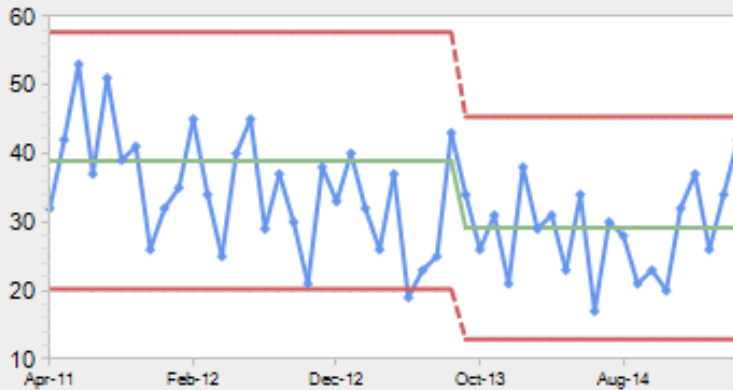
- 1) Measure no. of users using software per day
- 2) Measure staff satisfaction
- 3) Measuring training website usage
- 4) Measure views per SPC article

# Project foundation

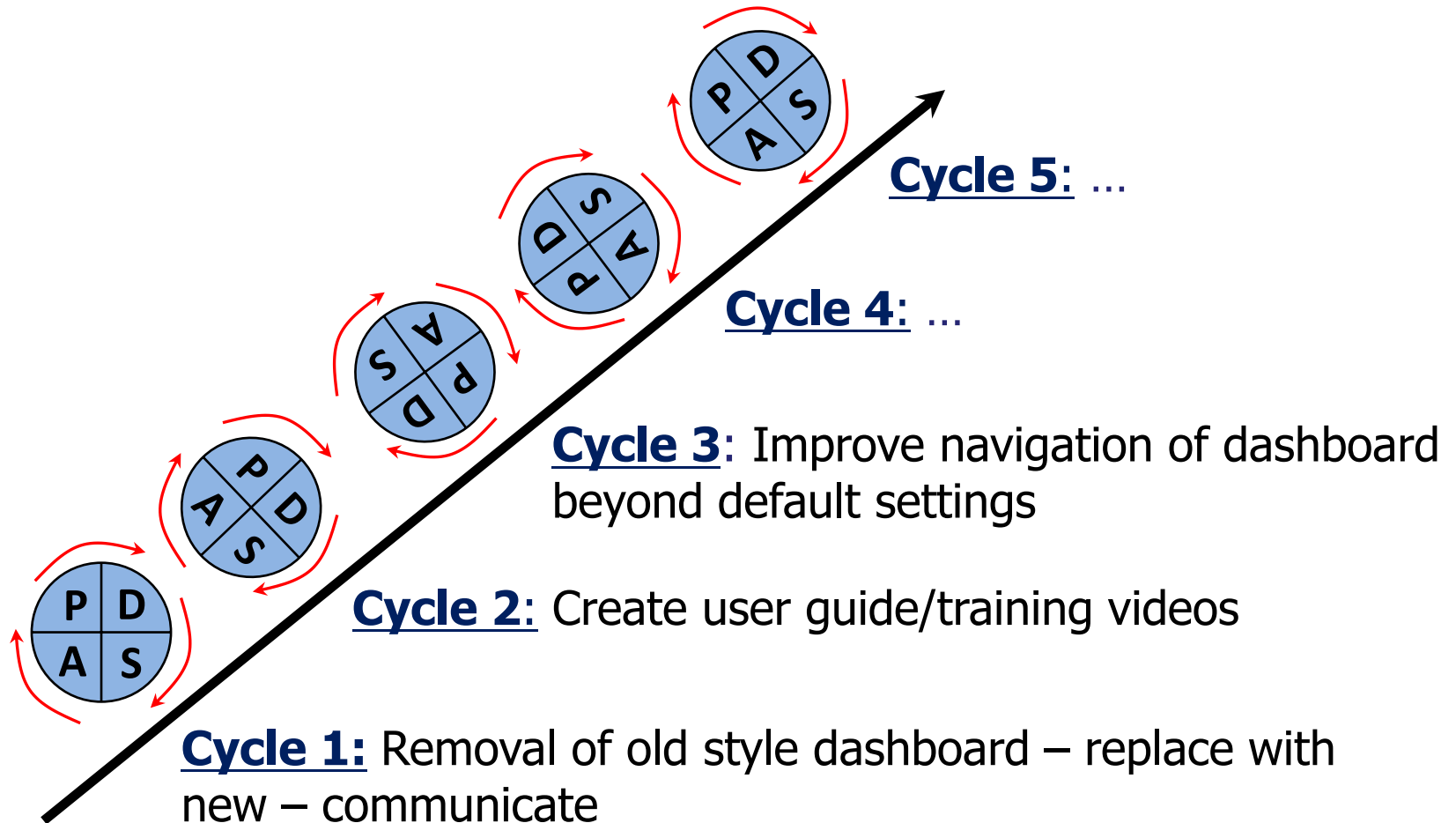
- SPC chart software embedded in the data warehouse
- Online reporting templates built



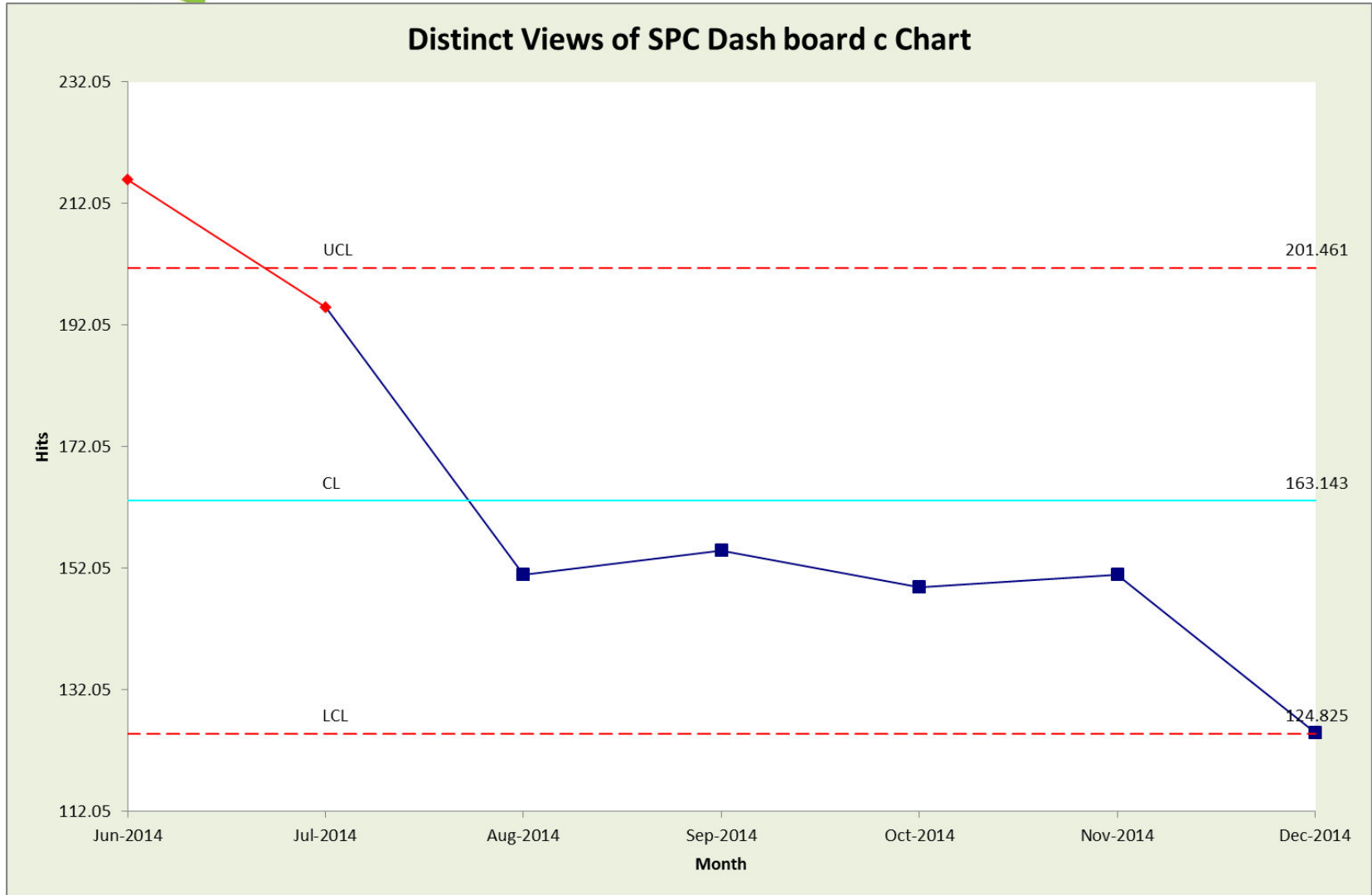
Number of Falls Reported



# Sequence of PDSA's



# Data



# Learning

- Project delayed by external factor (*Merge of trusts clinical system, data warehouse migration*)
  - *Took key staff away from the project for extended periods*
  - *Limited development whilst key systems were taken offline*
- *Weekly meetings are essential*
- *Seek support and understanding from departmental managers*

# What next

- Software implemented and deployed and flexible environment developed
  - Demonstrate test dashboard to users (QI team, performance and team leads)
  - Maintain weekly meeting, implement PDSA cycles (publishing dashboard)
  - Explore further developments
    - Develop Patient tablet PREM/PROM/FFT feedback
    - Develop support for individual/standalone QI project through apps